



Your professional flat roof specialist



Resin Roof Systems is a vibrant business that specialises in Fibreglass Flat Roofing and have been installing GRP systems for many years to the highest specifications.

We pride ourselves on our customer care and friendly approach to our customers. We take on board constructive feedback as this helps us to improve all aspects of our business. We strive to give our clients a first class service and product at a competitive price.

We also carry out repairs and maintenance to most roofing systems and install UPVC guttering, fascias and soffits to clients requirements. Skylights including domes, ventilation and drainage systems are also available on request or by specification.



Do not hesitate to give us a call for a free estimate, advice on your project or any questions that you might have without any pressure. We will gladly show you samples, our portfolio and give technical data.



Resin Roof Systems are GRP (Glass Reinforced Plastic - Fibreglass) Flat Roofing contractor's. We use GRP or Fibreglass as you will most likely know it, to produce tough and durable all-weather resistant flat roofing for buildings.

This is achieved using the latest Polyester Technology, which is not only strong & durable, it is maintenance free. Our Fibreglass flat roofing is so strong that it can be walked on and even worked on.

Our main profession is as GRP Flat Roofing Contractor's. However we also specialise in offering our slating, tiling and specialist lead services as well as UPVC Guttering, Fascia and Soffit services. As we all know it is much easier to have one person / company do all of your jobs rather than having many, Resin Roof Systems can do it all.



Many of our customers find that an overall better look is achieved when the Guttering, Fascia's and Soffits are replaced, while also upgrading their flat roof. This is because we replace these items with UPVC which is a more modern, attractive and longer lasting alternative to wood and cast iron.

Resin Roof Systems - flat roofing contractor's are a UK company based in Henley on Thames, Oxfordshire.

25 year GUARANTEE

Resin Roof Systems

STAGES OF ASSEMBLY

First of all the old roof is stripped down to the existing joists. We remove not just the felt but the decking also. Depending on the size of the roof a skip may be required for the waste. This will be organised by Resin Roof Systems.

New external grade pre coated marine ply 18mm BBA. approved boards are then fixed to the joists. If the roof requires additional fall new firrings will be put in. This will help to eliminate any puddling effects on refurbished roofs. However this might not totally get rid of puddling but as GRP roofing products are totally seamless with no joints, glue or welds no water will penetrate the roof from the deepest of puddles. Unlike felt a GRP roof is not absorbent therefore will not hold water. Any water that does collect will soon evaporate through normal weathering.



A primary basecoat of polyester resin is then applied. There is no heat needed for any of our process's so there is no fire risk.

All rainwater products are then installed, including guttering, downpipes, fascias and soffits. The edges are then trimmed with pre-formed GRP trims and sealed.

The roof is then applied with 900 grade chopstrand fibreglass matting. A secondary layer of polyester resin is then applied to ensure a strong and completely watertight barrier.

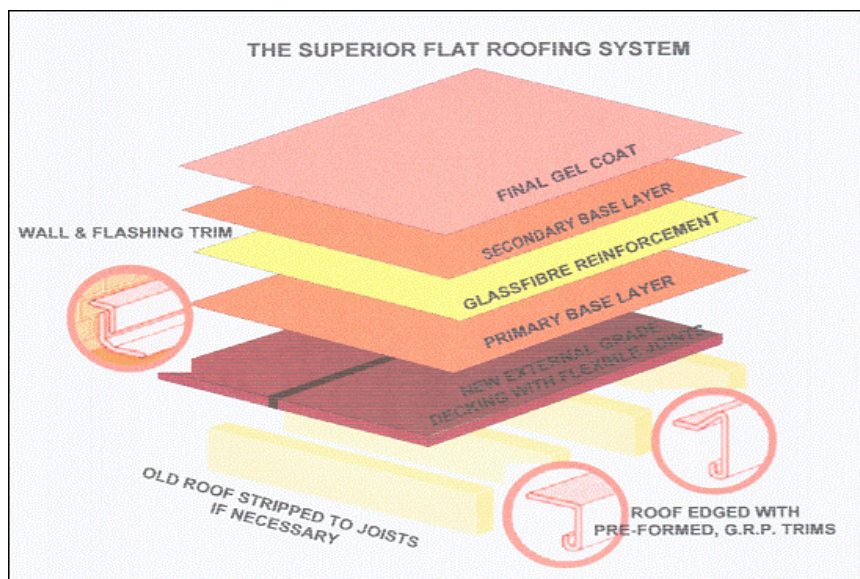
25 year GUARANTEE

Resin Roof Systems

A topcoat in a choice of colour is applied, however we do recommend dark grey as this helps to eliminate thermal gain. A non slip finish can be applied if you wish. You now have a high performance covering that looks superb and compliments your home.

Skylights and ventilation systems i.e. mushroom vents can be added and the fibreglass is taken up the sides to ensure a completely watertight seal.

The long-term benefits are what really counts as your new roof is maintenance free and no matter what the weather your home is protected for a very long time.





WHAT IS GRP (GLASS REINFORCED PLASTIC - FIBREGLASS)

GRP:

GRP (Glass Reinforced Plastic - Fibreglass) is an immensely versatile material which combines lightweight with its inherent strength to provide durable weather resistant finish with a variety of surface texture and an unlimited colour range available. Almost any complexity of shape, surface appearance or scale of work is achievable and it is both non-corrosive and non-conductive which can be made to achieve a fire rating which complies to BS476.

FIBERGLASS - GLASS FIBRE:

Glass is an ideal reinforcing fibre for plastics. It is one of the strongest of materials (the ultimate strength of a freshly drawn single filament of 9-15 microns diameter is about 3.5GPa). Developments in glass fibre technology mean that glass reinforcements are now available in a wide variety of styles and formats, suited to diverse applications in many industrial sectors. Manageable into any shape, with an experienced tradesperson, it offers superb resistance to the elements and has a long life span. Boats, water tanks, baths and pond linings to name a few are made from Glass Reinforced Plastic (GRP).





**FIBERGLASS ROOFING PRODUCTS ARE USED EXTENSIVELY
THROUGHOUT THE UK BY:**

Schools - Hospitals – Offices

Building Extensions - Local Authorities

Domestic & Commercial - For New &
Existing Roofs

Variety of Colours & Finishes -
Specialist Tradesmen

No Subcontractors - Will Not Crack, Split or Bubble

No Seams or Joints



25YRS MANUFACTURERS GUARANTEE

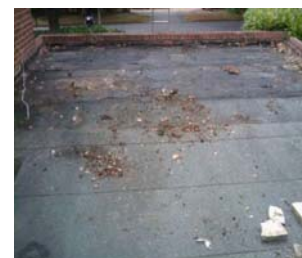


Comparison of long term costs

You can see from the table below that it is more cost effective over the long term to have GRP Fibreglass products. Many boats made with the same materials over fifty years ago are still seaworthy and still in use today. It is seamless unlike felt roofs, even top quality felt, that has many seams for water to penetrate.

	Price per m2	Approx Lifespan	Price /m2 /Year
Cheap Single Layer Felt	£50	5 Years	£10
3 Layer Felt	£80	10 Years	£8
GRP	£150	50 Years	£3

The above figures are an example only and do not constitute an offer to supply materials or services at an agreed price. Prices are based on an National average of prices quoted by numerous contractors installing various products, and are intended as an example of the approximate costs you would expect to pay for the various materials available. Clients are urged to obtain a free of charge site survey and quotation from reputable or recommended contractors for any planned projects. Prices examples and comparisons are based on figures obtained at the time of publication.





GRP FIBREGLASS FLAT ROOFING QUESTIONS??????

BELOW ARE SOME OF THE MAIN QUESTIONS THAT PEOPLE ASK. IF YOU HAVE A QUESTION THAT IS NOT LISTED OR ANSWERED ON OUR WEBSITE, PLEASE EMAIL US AT INFO@RESINROOFSYSTEMS.CO.UK WHERE WE WILL BE HAPPY TO ANSWER ALL YOUR QUESTIONS, OR CALL ON 0845 5005 888.

Q: Is this a new idea?

A: GRP (Glass Reinforced Plastic) or fibreglass has been used for many years for all kinds of products. Boats and pond liners are a couple of products that many people would associate with it. It is light, durable, waterproof, seamless and lasts for many years. Where better to use this but on your roof. Lots of people have installed this on their roof and have enjoyed it for many years so it is not a new idea its just that people are seeing the advantages, benefits of saving money and a maintenance free roof.

Q. I have a balcony that we use during the summer can I have a non slip surface?

A. Yes, some customers prefer a non slip surface.

Q. What is the difference between GRP and a rubber roof covering?

A. GRP is seamless, does not use glue, can be walked or worked on and will last for years. Vessels built over fifty years ago made of the same material are still in use today. Some rubber roof coverings can also be seamless however, glue is used which can break down and deteriorate that could allow seepage of water to penetrate. This will eventually rot timbers underneath and could not be noticed until it is too late. Rubber can be pierced when walked on and can break down, crack and deteriorate during normal weather conditions.

Q. Is the 20 year Guarantee transferable if I sell my property?

A. Yes, the 20 year Guarantee is transferable to future owners of your property. It has the added bonus of a further selling point when advertising your property for sale. This is an important consideration for buyers knowing that they have complete protection and peace of mind.

Q. My roof is dirty how can I clean it?

A. Your GRP roof can be swept clean as there is no problem walking on it. You can even use a pressure washer on it knowing there are no seams or joints. Do not use a pressure washer on felt roofs as water could penetrate the seams and would break down the roof covering.

Q. Can I have a different colour?

A. Yes, all colours are BSI approved. Please ask to see our colour range. We have thirty nine different colours although we recommend a light grey colour to diminish thermal gain.

Q. Can puddles or ponding be eliminated completely?

A. If the roof requires additional fall new firrings will be put in. This will help to eliminate any puddling effects on refurbished roofs. However this might not totally get rid of puddling but as GRP roofing products are totally seamless with no joints, glue or welds no water will penetrate the roof from the deepest of puddles. Unlike felt a GRP roof is not absorbent therefore will not hold water. Any water that does collect will soon evaporate through normal weathering.

Q. How long will a GRP roof last?

A. The truth is we don't know. Boats made of the same material over fifty years ago are showing no signs of breakdown and are still seaworthy today.

**Don't delay, contact Resin Roof Systems
today for a quote.**

0845 505 8888

Email: michael.jiggins@gmail.com

